



Golden Horizon
Biologics

Golden Horizon (Chengdu) Technology Co.,Ltd.

Technical Data sheet

Product Name: 10:1 blushwood berry extract

Botanical source: *Fontainea picrosperma*

Specification: 10:1

Part used: Fruit

Appearance: Brown fine powder

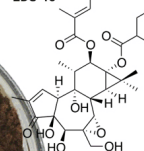
Test method: TLC



Golden Horizon
Biologics



EBC 46



Health benefits:

1. Protect and regenerate retinal purple (rhodopsin), and cure patients with eye diseases such as pigmentosa, retinitis, glaucoma, and myopia, etc.
2. Prevent the cardiovascular diseases.
3. Quench free radical, antioxidant, and anti-aging.
4. A treatment for mild inflammation of the mucous membranes of mouth and throat.
5. A treatment for diarrhea, enteritis, urethritis, cystitis and virosis rheum epidemic, with its antiphlogistic and bactericidal action.

Application:

1. Applied in food field, it is mainly used as food additives, it also can be added into many kinds of product;
2. Applied in health product field, it has good effect for cardiovascular diseases and cancer;
3. Applied in pharmaceutical field, it can be used to prevent variety of cardiovascular disease



Technical specification:

ITEM	SPECIFICATION
Appearance	Brown reddish powder
Odor/Taste	Characteristics
Partical Size	100% through 80 meshes
Loss on Drying	≤5.0%
Ash	≤5.0%
Assay(TLC)	10:1
Heavy Metals	≤20ppm
Arsenic (As)	≤2.0ppm
Plumbum (Pb)	≤3.0ppm
Mercury(Hg)	≤0.5ppm
Cadmium (Cd)	1.0ppm
Acephate	<0.1 PPM
Methamidophos	<0.1 PPM
parathion	<0.1 PPM
PCNB	<0.1 PPM
Total of Plate Count	≤1000CFU/g
Yeast and Mold	≤100CFU/g
Salmonella	Negative
E.coli	Negative

Packaging Details:

Package: 25kgs/fiber drum, inner with double-layer plastic bags.

Storage: Store in cool, dry place, and keep away from direct strong light.

END OF DOCUMENT